

CADISON® Pipe Support Modeler

CADISON® Pipe Support Modeler

Pipe Support Modeler assists a user to create and edit the secondary supports in an easy and intelligent manner. The wizard for pipe support allows the users to create different types of pre-defined supports. A user-friendly interface provides flexibility, by allowing a user to create variations in predefined types of supports during the data entry stage (for e.g. offset, orientation and industry validations). Supports created using 'Create Support' wizard are both constructible and erectable.

- It has seamless integration into the CADISON® 3D Designer workflow. The secondary support can also be used for cable trays and ventilation ducts
- The use of CADISON® MATPIPE catalogs for steel components leads to the standardization of support systems
- Customized reporting and labeling function
- Auto-linking to standard support helps easy identification of associated secondary support in the isometric drawing
- Predefined mounts can be saved as an assembly, which can be imported back. Subsequent changes to the geometry is easy to accomplish
- Various options enable the users to select different profiles for horizontal and vertical elements. The mounting position can be selected as per the requirement
- Possibility to create the supports with or without the base plates. A user can select the base plates from existing CADISON® MATPIPE catalogs
- Through a design verification, invalid entries are avoided

Support Types: Users can select a type of support from various available predefined support types. Based on the selection of support type, a corresponding illustrative image is displayed on the dialog box. This enables the users to visualize the support created and enter the required dimensions accurately.

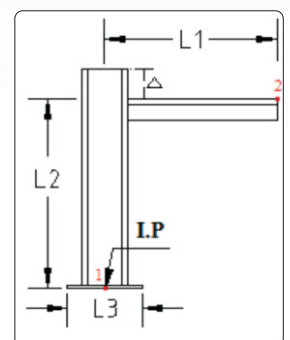
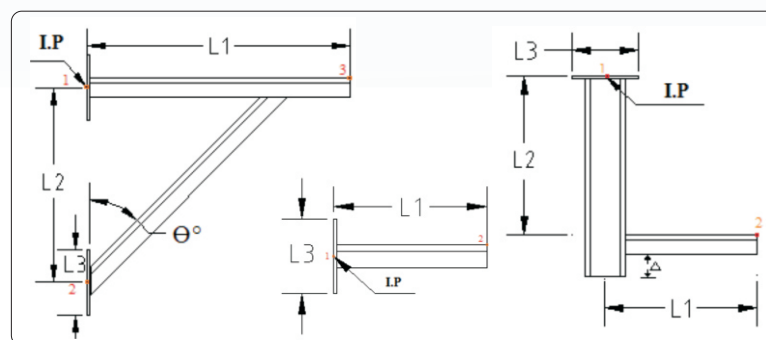
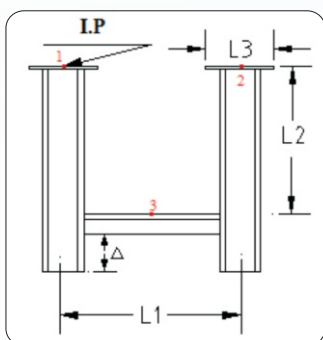
The following support types can be predefined:

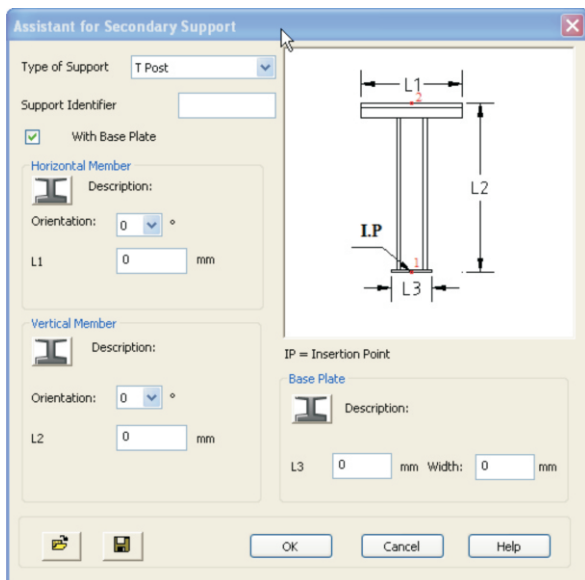
- Goal Post
- Inverted Goal Post
- Cantilever
- Braced Cantilever
- T Post
- L Post
- Inverted L Post
- Extended Goal Post
- Inverted Extended Goal Post
- Fixed Beam

Profile alignment with the "profile orientation" option, provides flexibility to create multiple types of supports by changing the orientation of horizontal and vertical members. Moreover, it also validates the combination of profile orientation based on the support & profile type selected in the graphic user interface (GUI).

Offset feature enable the users to shift the horizontal profile to support welding. This function also provides additional flexibility to position the horizontal member to suite various position requirements.

Insertion Points: Additional insertion points of the respective support type at a structure level provide better placement and alignment in a 3D model. Regardless of the profile type used, these insertion points are consistent as they relate to the selected support type. The "Edit Secondary Support" function uses the original insertion point over which the elements have been placed. The modified elements are recreated with the new parameters on the same insertion point. Thus, one needs less time to update the existing structure as per the modified parameters.





Edit Secondary Support

This feature allows a user to easily modify existing supports. The edit feature recognizes the support that has been created using 'create support wizard'. It will display the parameters entered while creating the support, so that a user can change it accordingly.

In addition, this feature allows a user to maintain backward compatibility and select the structure created in previous versions. This structure can be recreated according to the recent validations incorporated in the latest version.

Report Generation

- The CADISON® report function "support list" is available to the users
- All reports can be stored in the CADISON document management with an active revision management system
- CADISON® supports MS Word, Excel and PDF to generate multi-language reports

Hookup Drawings

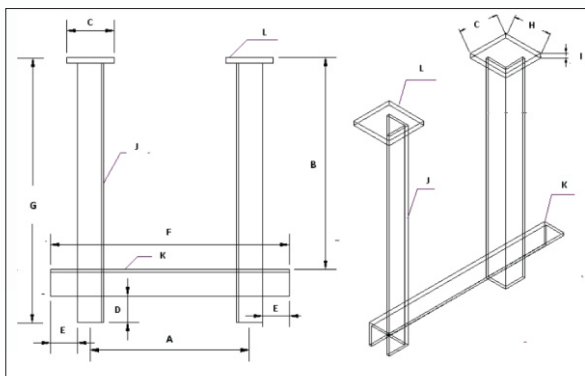
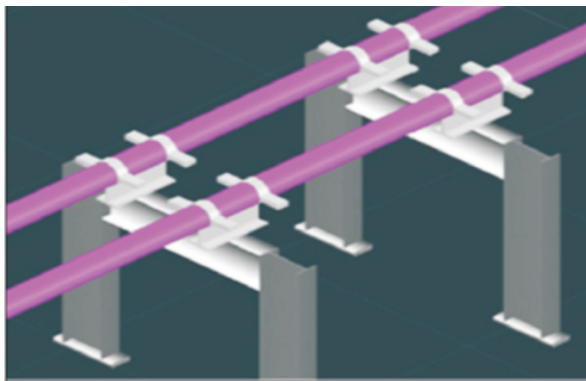
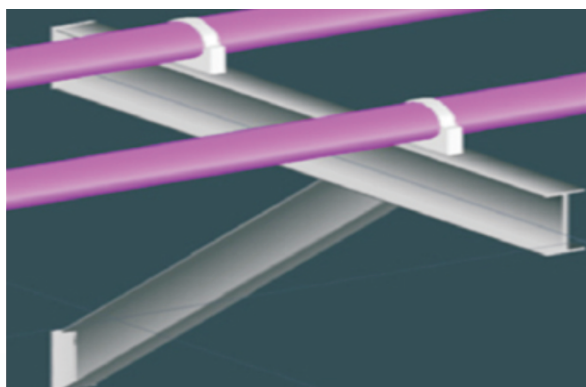
Hookup drawing feature enables the user to create automatic production drawings of a selected type of support. Users can create hookup drawing for selected secondary support as well as multiple supports of a specific type.

Each type of support has a specific drawing template with predefined typical to represent dimensions. There is a provision to revise or replace typicals to be displayed in the hookup drawings as per the organization needs. Thus, the hookup drawings can be adapted quickly and easily to the changing project requirements.

Number of columns and rows in a hookup drawing table can be configured in drawing templates. Depending on the requirements, a user can rearrange or determine the number of columns of a table.

Benefits of Pipe Support Modeler

- Faster creation of pipe supports
- Clash detection & Bill of Material (BOM)
- Rendering and interference detection
- Real time visualization helps in efficient modeling of secondary supports to avoid potential interference with other plant objects
- BOM specific to plant area
- BOM based on type of supports
- BOM based on profile types



ITandFactory GmbH
Bad Soden, Germany
Phone: +49 6196 93490 0
E-Mail: info@ITandFactory.com

www.cadison.com

ITandFactory AG
Rheinfelden, Switzerland
Phone: +41 61 833 3050
E-Mail: rheinfelden@ITandFactory.com

