



☒ Hide completed tasks

Name of task

Task description

Task container - Database: RH5_DB.pg\BNSLAPTOP15 / Admin

My task containers

Name	State	Progress	Start Date	Fin
Hatching	In progress	0/35	11/23/2017	1

Task container

Objects in task container

Name of task

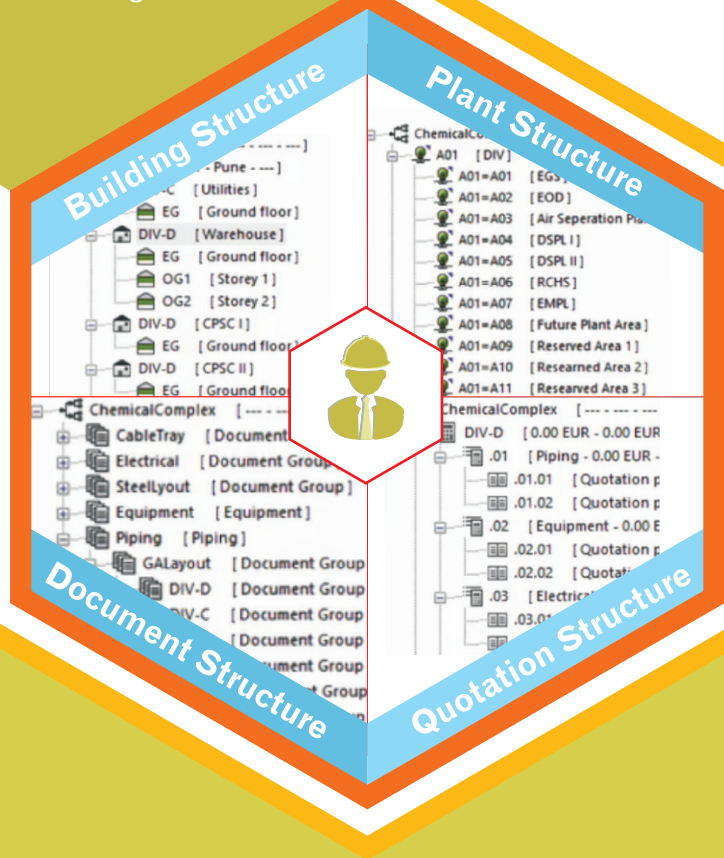
Description

Comments

\$	Hatch color	Hatch pattern angle	Hatch pattern
green	0.00		ACAD_ISO02W100
green	0.00		ACAD_ISO02W100
green	0.00		ACAD_ISO02W100
green	0.00		ACAD_ISO02W100
green	0.00		ACAD_ISO02W100
green	0.00		ACAD_ISO02W100
green	0.00		ACAD_ISO02W100
€			

Hatch pattern

Boundary layer



CADISON Project Engineer for Project Cost Estimation & Project Supervision at Management Level without CAD

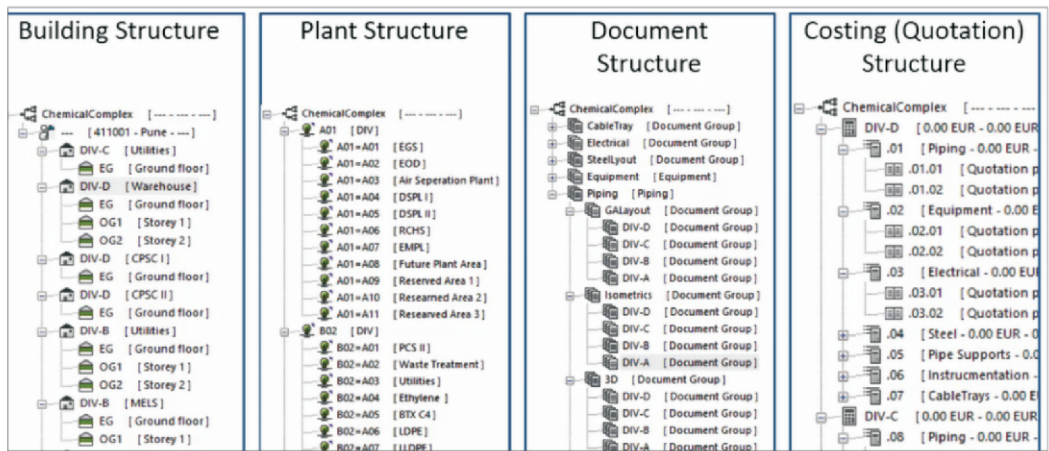


Key Features:

- Easier Plant Set-up (multi-disciplinary project structure)
- Innovative & Simple-to-use 'User Interface'
- Effective and central management of engineering data through built-in PDM
- Saves the cost and efforts of managing and monitoring projects with task assignment and monitoring functionality
- Interface with MS Project for Scheduling
- Built-in Cost Estimator for project costing
- Bi-directional interface with ERP systems
- Asset Tagging for identification of objects
- Reports for management review(s)
- Reduce project collaboration costs and errors

Structured Project Set-up and Planning:

- Tree Structure with the user-friendly interface (Object Manager & Object Inspector)
- Project grouping / structuring with plant areas, drawings and documents in 'document / folder groups' in a hierarchical manner (Parent-Child Relationship of objects)
- Easier input of data (attributes) through Object Inspector. Easy drag and drop features to add external documents (PDF, Excel, Word, XML files, etc.)
- Check-in and check-out functionality



Structured Project Costing with Built-in Cost Estimator:

4. Calculation and Purchase Calculator

- Built-in calculation module for price calculation (assigning list prices, factors, discounts rates, etc.)
- On-line calculation, quotation, actual price, calculation on the basis of working hours, discipline wise calculation, etc.
- Cost calculation for non-Engineering assets / Consumables (e.g. Lubricants, paints, weld items, facility items, etc.)
- Automatic updates of Costing reports based on changes done at the project / object level
- Direct access to Cost Information through the bi-directional interface with ERP

Project Data Management and Asset Tagging:

- Manage (plant) project documents and deliverables through Project Engineer Tree Structure and built-in PDM system
- Integrated viewer for viewing of plans and documents (isometrics, piping and instrumentation diagrams, 3D models and construction deliverables)
- Define and manage objects (Assets) and attributes by defining your own tagging system or industry-standard tagging convention (DIN, KKS, etc.)
- Maintain the uniformity in Asset Tagging across the plant disciplines (piping systems, equipment, etc.) which is synchronized to accurate plant drawings

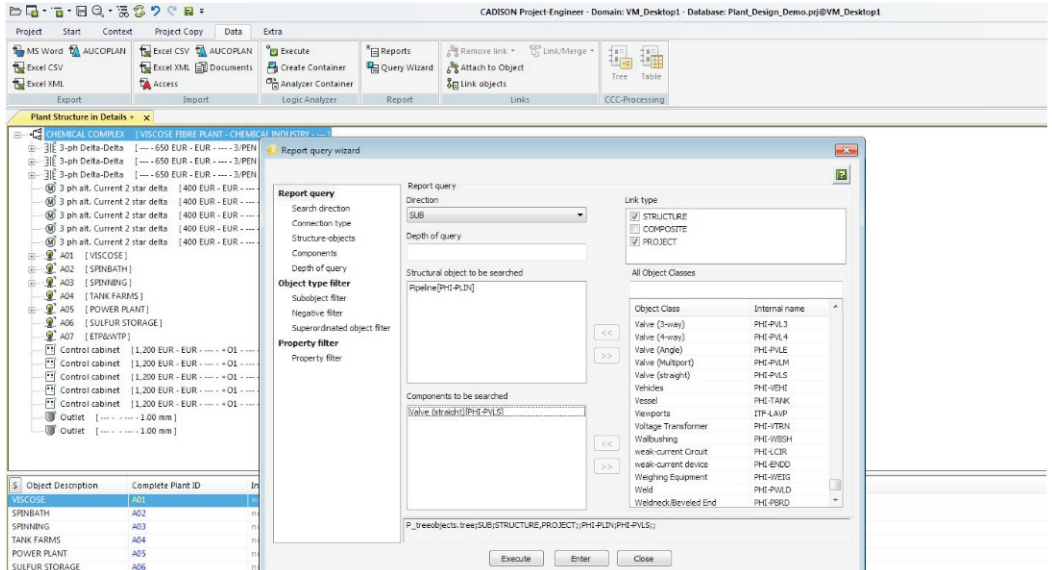
it ifactory solution provider		pipeline list			
Customer: Project: Project no.:		--- STRUCTURED_DEMO_IMPERIAL			
Pipeline no.	Description	Material	Medium	DN	PN
=WS001P001	Pipeline for City Water ---	Carbon Steel	City Water	12"	150LB S
=WS001P002	Pipeline for Water ---	Carbon Steel	Water	6"	150LB S
=WS001P003	Pipeline for Water ---	Carbon Steel	Water	6"	150LB S
=WS001P004	Pipeline for Water ---	Carbon Steel	Water	4"	150LB S
=WS001P005	Pipeline for Water ---	Carbon Steel	Water	4"	150LB S
=WS001P006	Pipeline for Water ---	Carbon Steel	Water	4"	150LB S
=WS001P006	Pipeline for Water ---	Carbon Steel	Water	4"	150LB S
=WS001P007	Pipeline for Vent Air ---	Carbon Steel	Vent Air	1"	150LB S
=WS002P012	Pipeline for Water ---		Water	6"	
=WS002P013	Pipeline for Water ---		Water	6"	
=WS002P014	Pipeline for Water ---		Water	4"	

Project Scheduling & Task Management:

- The task container enables the project administrators to plan, create and monitor the project data
- Ability to define to-do (task) list for all project members and progress can be monitored by Administrator
- User access rights and task assignment
- Bi-directional Interface with MS Project for Scheduling

Report Generation:

- Ability to customize Report Templates with ease and generate reports at the desired project or object level from the tree structure
- BOM & Reports for various document groups
- Generate purchase reports and proposals directly from the CADISON® Project Engineer
- Non-technical managers / management can get the overall visibility into the plant progress quickly by reviewing & creating the updated reports
- Report Query Wizard for quick and accurate report template creation, saves time and reduce the errors



Benefits:

- Single system for Project Planning, Project Control Management, and Cost Estimation
- Reduces Project Planning and Data Management time by 30%
- Improves Pre-bid Engineering process significantly
- Context-based dynamic input forms for better usability of project work-flow management
- Integration with business systems (ERP) for accurate procurement decisions
- Built-in Revision Management and Change Management for Error-Free Planning
- Reusability of data for future projects for quick Project Planning & Cost Estimation
- Single Repository for all Non-CAD files, PDF (drawings), Reports, etc.
- Asset Information Management (for maintenance)