

Installation Instructions for CADISON R/5.6

Preparing for the installation

Before starting to install the CADISON R/5.6 software, all directories and data should be backed up (project databases, Object Manager template objects, user management, configurations, MATPIPE catalogs, other local modifications).

Any original data that has been changed may be overwritten by installing from this CD. Copies or renamed components will not be overwritten by the installation.

Please check your rights on your system before installing the updates or modifications. You will need administrator rights for this installation.

In the case of questions, please contact the **CADISON Helpdesk**

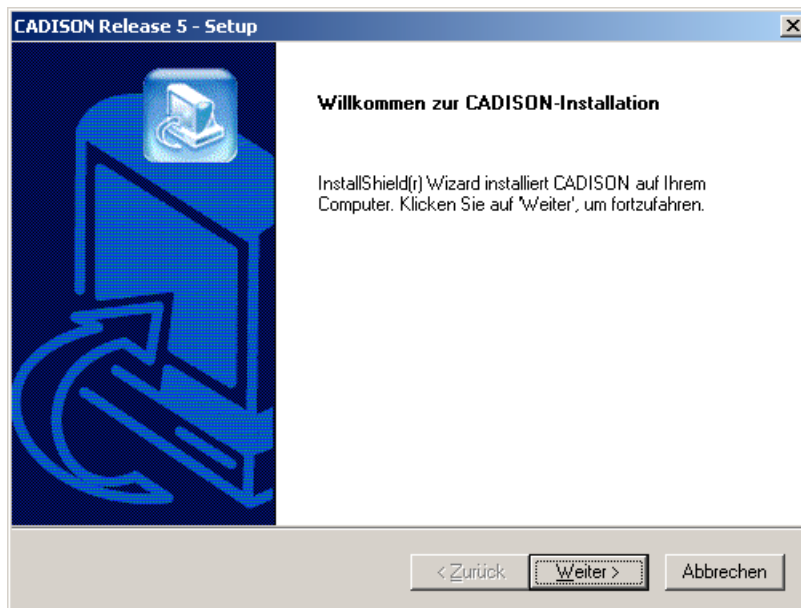
Telephone +49 6196 6092 500
Fax +49 6196 6092 202
E-Mail cadisonhotline@itandfactory.com

Installation

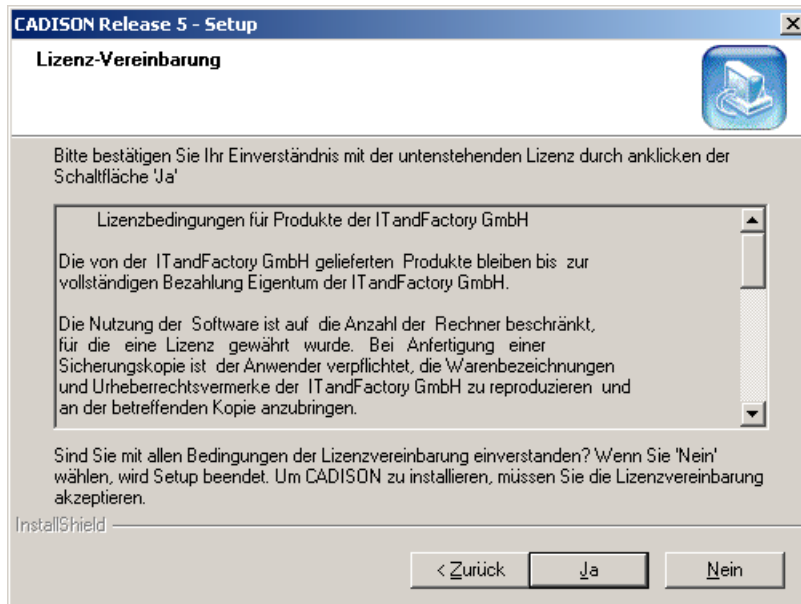
1. Insert the CD-Rom, and start the installation by running the program [your cd-rom drive]:\> Setup.exe
2. Select the installation language (English/German)



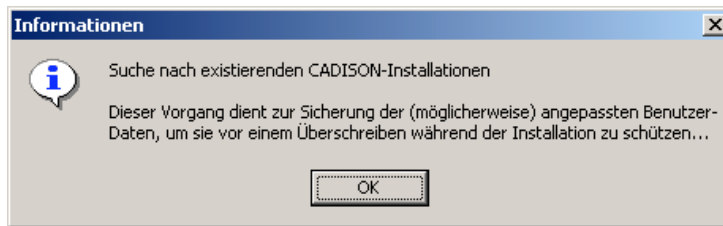
- The InstallShield wizard will then start the setup routine to lead you through the rest of the installation process.



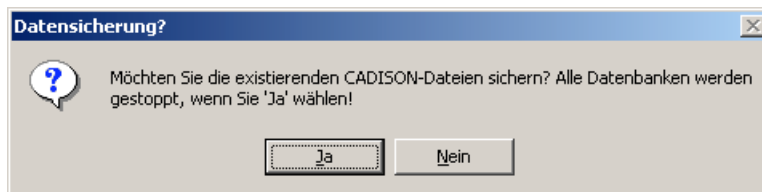
- Please read the License Agreement and confirm your agreement by selecting Yes



5. The setup routine will check for existing files on your computer, and offer to back these up for you.



6. Any existing databases must be stopped before they can be backed up. If you wish to stop the databases, confirm the following selection by clicking Yes:



7. The VERSANT database management service will be removed

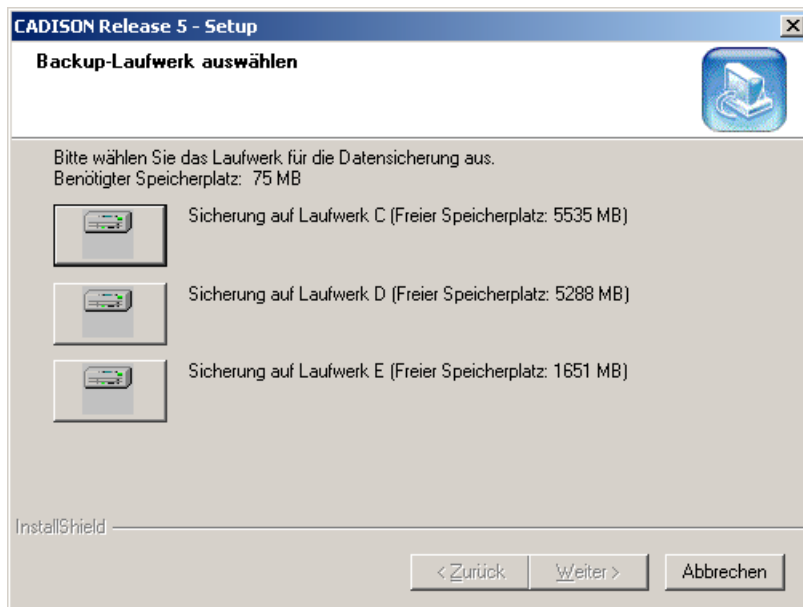


and then an option will be provided for you to select a backup directory (the backup storage requirement will also be shown):

Notes:

If you wish to interrupt the installation at this point, you must reinstall the system files for the existing installation.

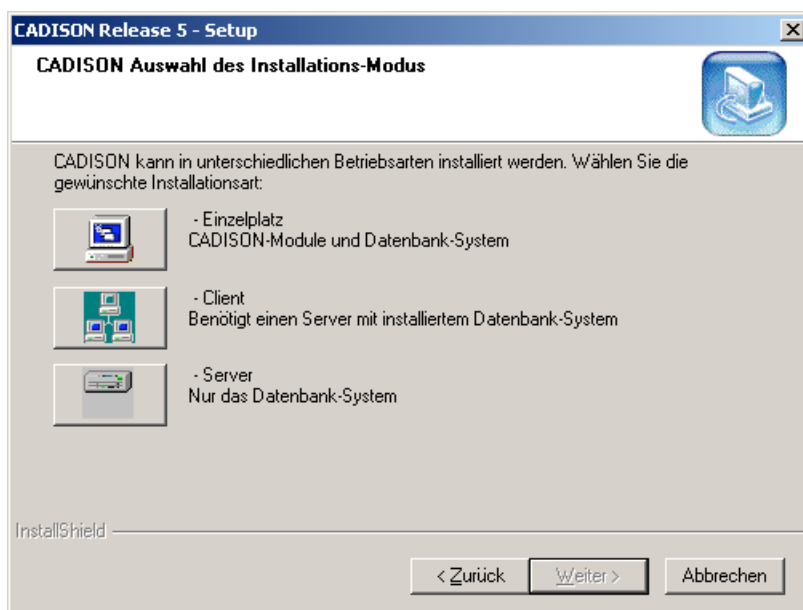
Select the backup directory:



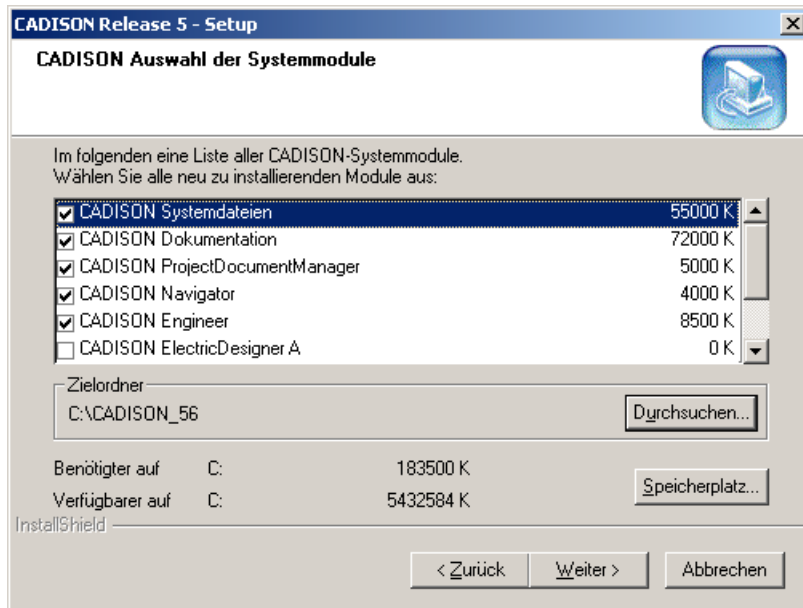
Select a backup drive.
Once this is selected, the backup is created:



8. Select the installation mode

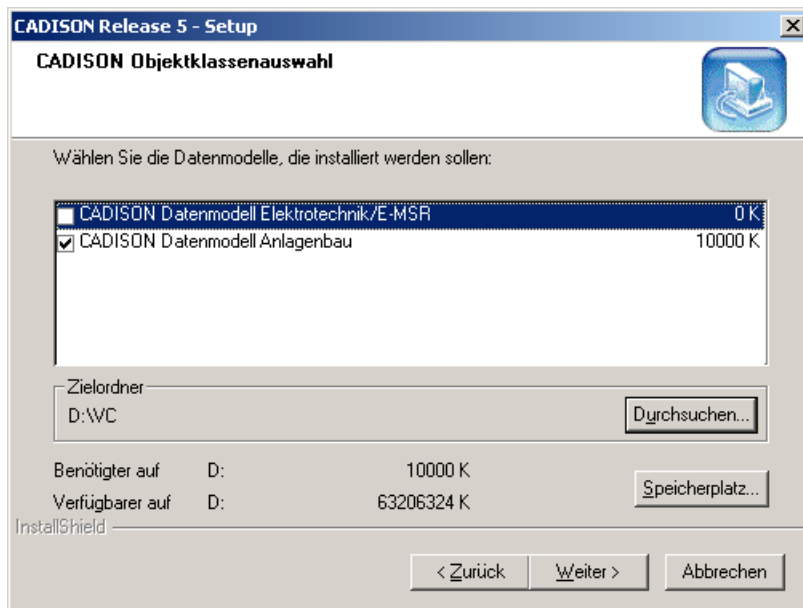


9. Define what to install, and where to install it

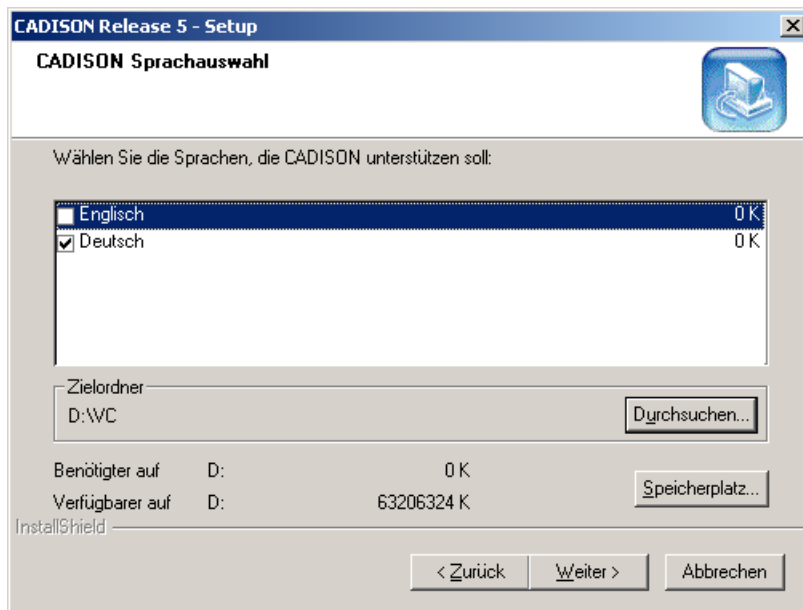


The modules ISOGEN Interface and PIPE2 Interface are installed in a separate stage.

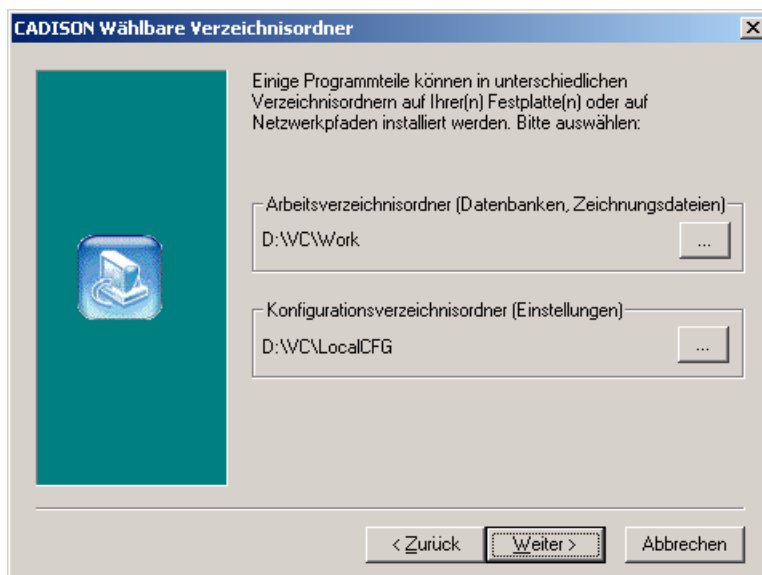
10. Select the object models to be installed



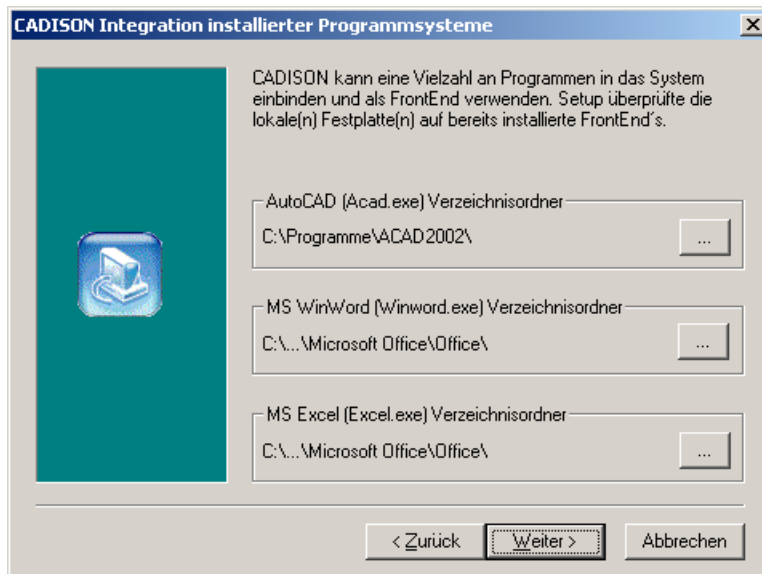
11. Select the installation data language



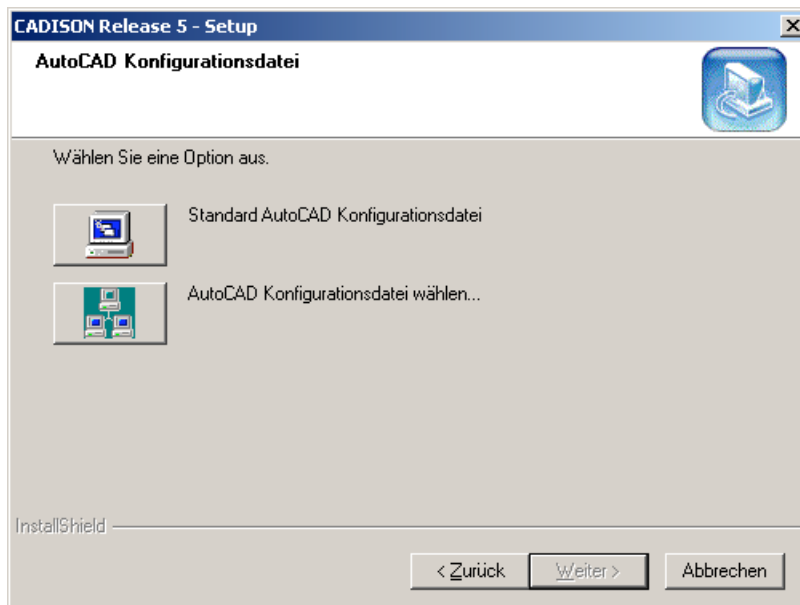
12. Define the directories that can be selected to store the configuration and databases and projects



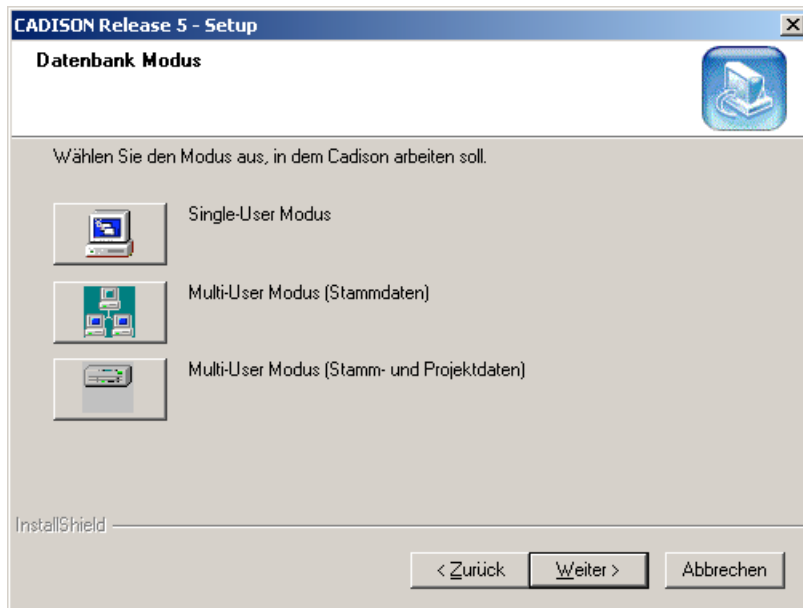
13. Create the link to the basis CAD application and existing program systems



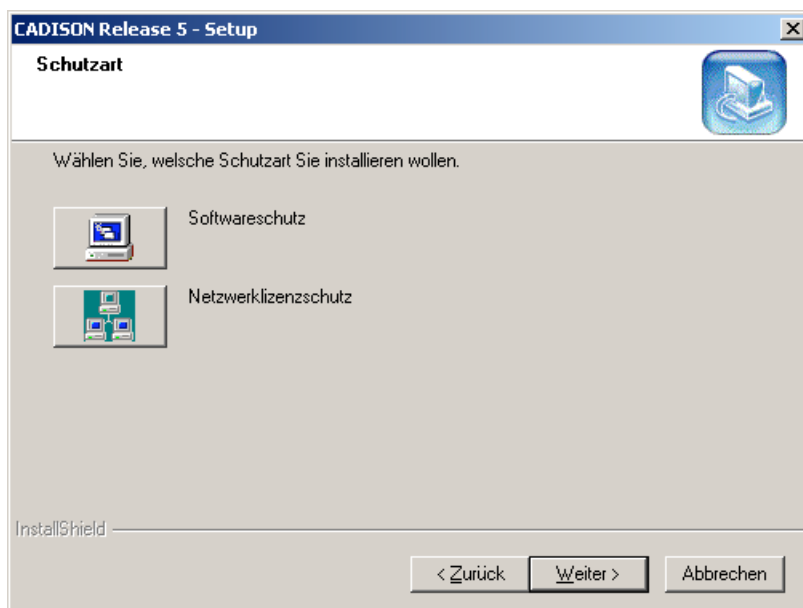
14. Define the AutoCAD configuration file



15. Define the database mode

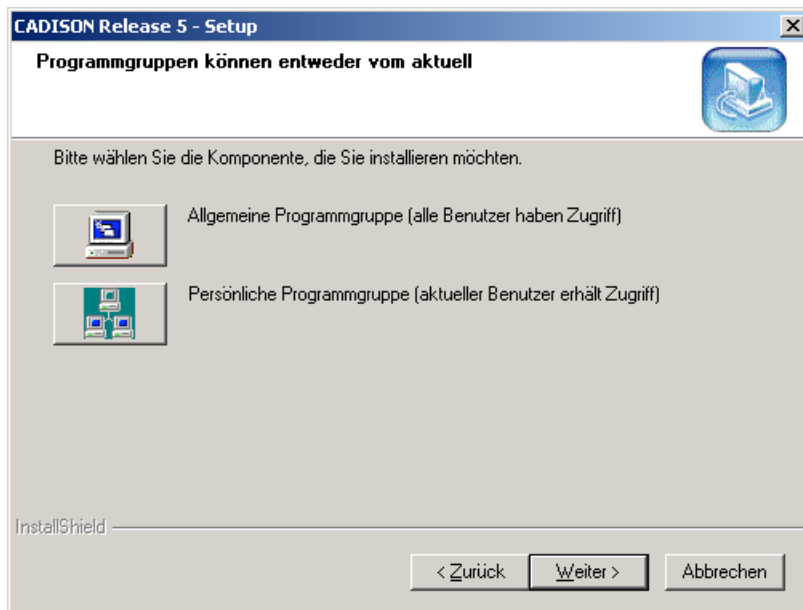


16. Select the protection method you wish to install

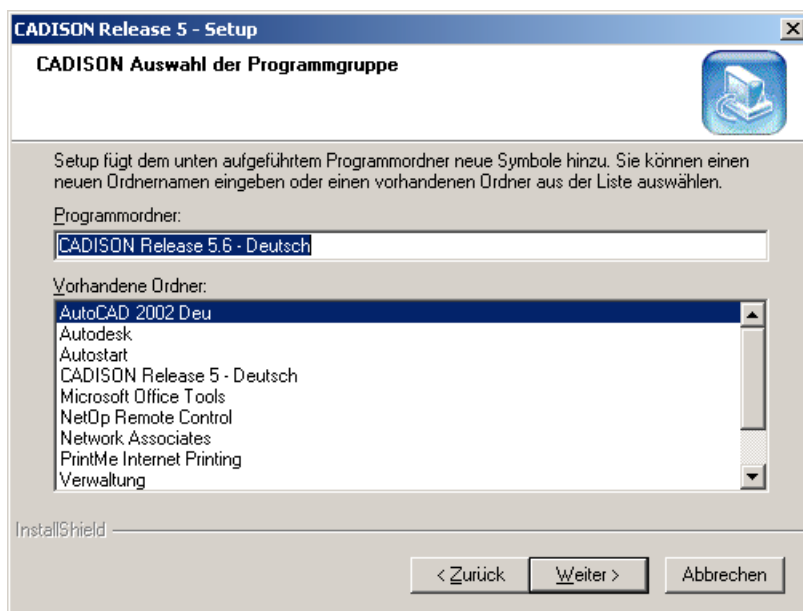


Software protection => Workstation license
 Network license protection => Floating licenses using the NLM

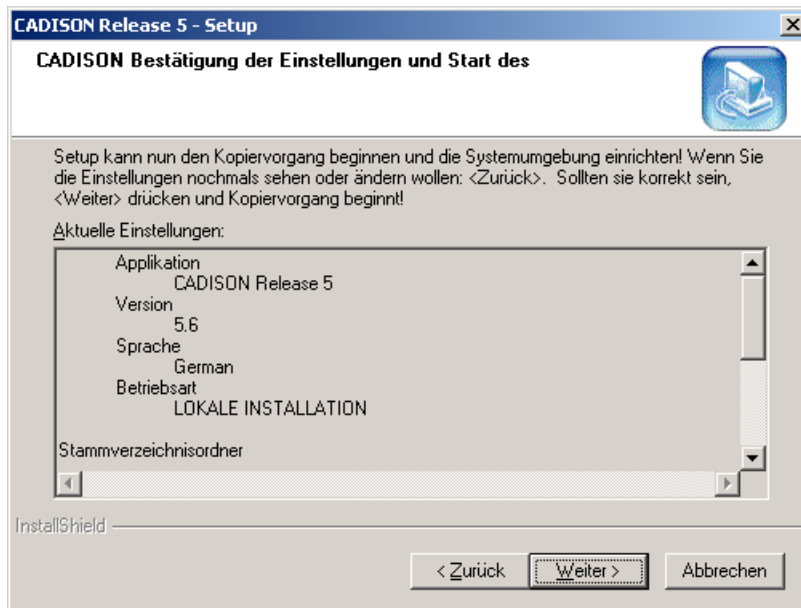
17. Define access to program groups



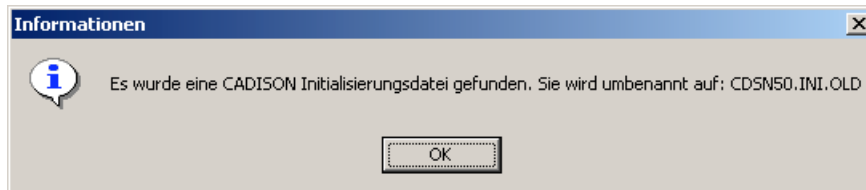
18. Define the program group



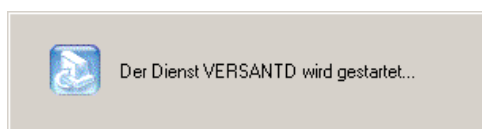
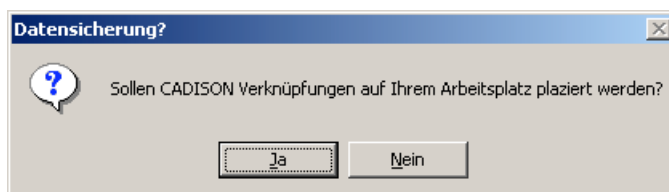
19. Then check your settings and start the installation



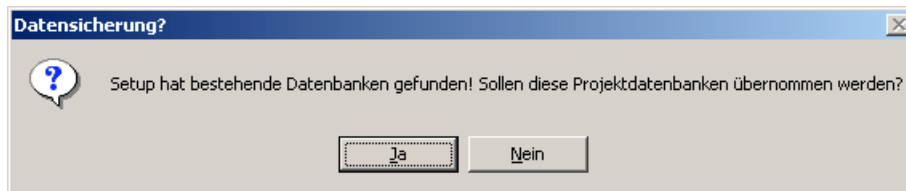
20. Existing VERSANT services are removed and the hard disk is checked for any other existing installation components. If the search is successful, the existing data is backed up:



21. The installation then runs automatically. Please following the instructions on the screen.

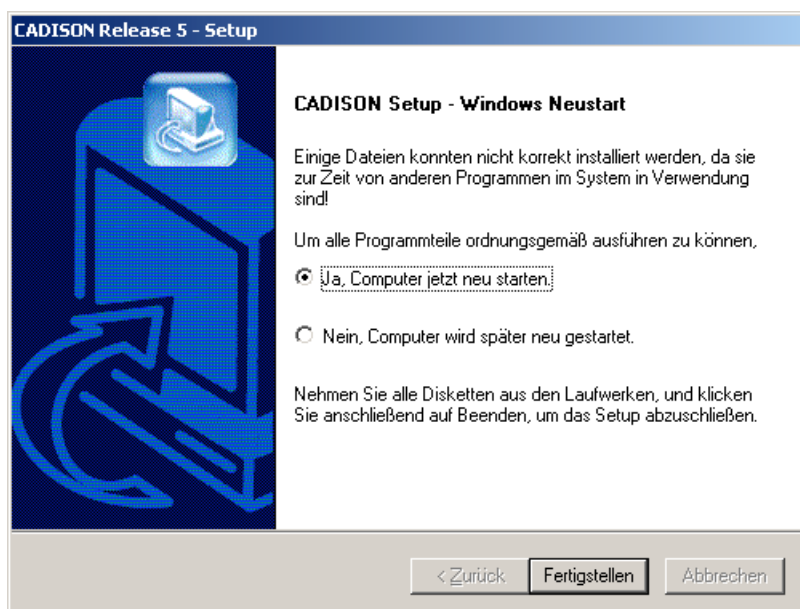


22. If CADISON data already existed before the installation, these can now be integrated into the updated environment.



23. The setup routine has now completed

and the system requests that you reboot the computer.



24. After the computer has rebooted, the modules ISOGEN Interface and/or PIPE2 Interface can be installed. Please switch to the directory [your cd-rom drive]:\> Modules. The "setup.exe" file is located in the sub directories: <Application>\German\.

25. In order for all changes to become effective, the system must be reinitialized after installation. Please perform the following actions:
Click on Start | Programs | Cadison R5.6 – English | Administration | Reinitialize system.

26. We wish you every success in your use of the new CADISON version R/5.6.